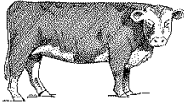
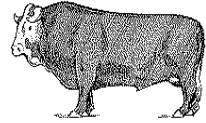


— ENTRIES CLOSE SEPTEMBER 15, 2009 —
DEPARTMENT K - BEEF CATTLE



**Open Beef Cattle
Feeder Calf
Junior Market Steer
Junior Beef Heifer**



**Subdepartment A - OPEN BEEF CATTLE
TOTAL PREMIUMS OFFERED - \$70,640**

SUPERINTENDENTS: BRENT JENNINGS-North Carolina State University

JUDGES: DARREN RICHMOND-Ringold, GA-Santa Gertrudis
TERRY BURKS-Bowling Green, KY
CODY SANKEY-East Lansing, MI

**Health Regulations - see page 89
INFORMATION FOR BEEF CATTLE EXHIBITORS**

COMPETITION: "Open to the World"

Open Beef Cattle entries for the 2009 shows will be limited to 500 space entries. No additional entries will be accepted after September 15, 2009, or after 500 entries are received.

CHECK IN: All exhibitors must check in with Superintendent by 12:00 noon on Monday, October 19. Verification of animal registration and proper entry will be held between 11:00 a.m. and 3:00 p.m. the same day, and entries not validated by 3:00 p.m. will be ineligible for competition in their respective shows. Exhibitors displaying open beef cattle may enter the grounds after 6:00 p.m. Sunday, October 18. These cattle will be allowed in the Graham Building after 8:00 a.m. Monday, October 19. Animals will not be allowed to enter the barns until inspected and passed by health officials. An approval card will be issued after inspection, prior to entering the barn. Exhibitors must notify open show superintendent upon arrival.

SHOW DATE:

ANGUS—Tuesday, Oct. 20, 9:00 a.m.
BELTED GALLOWAY—Tuesday, Oct. 20, 9:00 a.m.
SIMMENTAL—Tuesday, Oct. 20, Noon
LIMOUSIN—Tuesday, Oct. 20, Noon
CHAROLAIS—Tuesday, Oct. 20, 3:00 p.m.
RED ANGUS—Tuesday, Oct. 20, 3:00 p.m.
HEREFORD—Wednesday, Oct. 21, 9:00 a.m.
GELBVIEH—Wednesday, Oct. 21, 9:00 a.m.
SANTA GERTRUDIS—Wednesday, Oct. 21, Noon
ALL OTHER BREEDS—Wednesday, Oct. 21, Noon

RELEASE TIME: Wednesday, Oct. 21 at 4:00 p.m. POSITIVELY NOT BEFORE THAT DATE AND TIME unless announced by Superintendent. PREMIUMS WILL BE FORFEITED IF ANIMALS OR TACK ARE REMOVED PRIOR TO RELEASE TIME.

RULES AND REGULATIONS

Except in cases of conflict, in which event the following Rules and Regulations will prevail, the General Rules and Regulations of the Livestock Division and the General Rules and Regulations of the Fair will govern this department. **BE SURE TO READ BOTH BEFORE ENTERING OR COMPETING IN THIS DEPARTMENT.** Some - but not all - are repeated herewith for emphasis, and others of the following Rules and Regulations apply only to this Department.

MAKE YOUR ENTRIES EARLY!! THE RIGHT IS RESERVED AND WILL BE USED TO REJECT ENTRIES OR PART OF ENTRIES RECEIVED AFTER ALL AVAILABLE SPACE IS TAKEN.

Official printed forms must be used in making application for entry. Two will be found in the back of this book. Additional copies are available upon request. **Use separate forms for making entries in other departments.** *Be sure to fill in the application form completely, accurately, and legibly.* Give your rural route number, post office number, or city street address and zip code.

Indicate on the form the total number of animals you will exhibit, and the total number of stall spaces you will require, including those to be used for gear, feed and bedding (no more than 2 for tack). Payment of a fee of \$5.00 for each space requested must accompany your application. Due to space limitations, a maximum of 15 spaces will be allotted to any exhibitor.

ALL NURSE COWS HAVE BEEN RULED OUT and will not be allowed on the fairgrounds.

List the class number, as indicated in the premium list, for which each entry is made. Do not make entries in the championship classes. *Use a separate line for each animal.* Indicate if you plan to make entries in the group classes, and name the animals which will make up your group entries. Entries in the group classes must have previously been exhibited in the individual classes.

List, also, on the application form the name registry number of each animal entered, its date of birth, its sex, the names and registry numbers of its sire and dam, and the name of the breeder. Bring your registration certificates to the Fair. Animals without original registration certificates will not be eligible to show. **No photo copies will be accepted.**

All animals over six months of age must be registered with their respective breed association in the name of the bona fide owner, who must have owned the animal for at least 30 days prior to the date of the show. No Exhibitor may win more than two premium monies in any one class.

Failure to properly display exhibitor/entry number during show will constitute forfeiture of premiums.

Health regulations of the Veterinary Division of the N.C. Department of Agriculture will be strictly enforced. **BE SURE TO READ THESE UNDER "RULES AND REGULATIONS OF THE LIVESTOCK DIVISION"** before entering or competing in this department.

Every precaution should be taken on the part of exhibitors to use individual utensils in feeding and watering cattle. Common water troughs are forbidden. All cars and trucks used for transportation of animals are considered "exposed premises" under the health regulations of the Veterinarian Division.

First place winners in individual classes are eligible to compete for Championship awards. Other first place winners in individual classes, plus the second place winner in the individual class which produced the Champion, will be eligible to compete for Reserve Championship awards.

A breed must have more than 20 head shown in the individual classes to maintain a show.

If a breed drops below 20 head in the show, it will automatically be placed on a one-year probation. If the breed falls below 20 head two consecutive years, the show will be dropped.

For a breed to start a new show, the application must be made to the State Fair General Livestock Director along with assurance of at least 20 head and two breeders/farms by December 1 preceding the date of the proposed show. An official show classification from the breed registry must also accompany all requests.

All breeds desiring a live animal display will make the request in writing to the State Fair General Livestock Director by September 1. Regular breeding cattle tie spaces will be assigned by the beef superintendent not to exceed 8 tie spaces including tack. The display cattle will be subject to the same rules and regulations as the open show entries.

Official Breed representatives are encouraged to attend the show and check animals to be shown. However, they must complete their duties and inform the Livestock Office 20 hours prior to show time or no later than 4 p.m. the day preceding their respective show whichever is greater.

HERDSMEN'S CONTEST

PREMIUMS Herdsmen_1st \$125 Herdsmen_2nd \$100 Herdsmen_3rd \$75
 PREMIUMS Herdsmen_4th \$50 Herdsmen_5th \$25

All herdsman in charge of beef cattle will automatically be considered entrants in this contest, designed to promote neatness, courtesy, attention to show requirements, and all-round efficiency on the part of personnel in charge of animals on exhibit. The contest will start Monday, Oct. 20 at 2:00 p.m., and will continue through release time, at which time the winners will be announced. The score card which will serve as the basis for the judges making their decision will be found under the General Rules and Regulations of the Livestock Division.



ANGUS SHOW

"Competition Open To The World"

PARTICIPATION STATEMENT

The North Carolina State Fair Open Angus Show abides by the regulations and classifications provided by the American Angus Association effective July 1, 2009.

PREMIUMS 1stPlace \$75 2ndPlace \$65 3rdPlace \$55 4thPlace \$50
 PREMIUMS 5thPlace \$40 6thPlace \$40 7thPlace \$35 8thPlace \$35
 Division Champions \$50 Division Reserve Champions \$25

Category A **ANGUS - Open Beef Cattle**

- KA001 - Junior heifer calves, calved March 1, 2009 and after
- KA002 - Junior heifer calves, calved between February 1 and February 28, 2009
- KA003 - Junior heifer calves, calved January 1 and January 31, 2009
 - Junior Heifer Calf Champion Ribbon
 - Reserve Junior Heifer Calf Champion Ribbon
- KA004 - Late senior heifer calves, calved between Nov. 1 and December 31, 2008
- KA005 - Early senior heifer calves, calved between September 1 & October 31, 2008
 - Senior Heifer Calf Champion Ribbon
 - Reserve Senior Heifer Calf Champion Ribbon
- KA006 - Late summer yearling heifer, calved between July 1 and August 31, 2008
- KA007 - Early summer yearling heifer, calved between May 1 and June 30, 2008
 - Intermediate Heifer Champion Ribbon
 - Reserve Intermediate Heifer Champion Ribbon
- KA008 - April junior yearling heifers, calved between April 1 and April 30, 2008
- KA009 - March junior yearling heifers, calved between March 1 and March 31, 2008
- KA010 - Early junior yearling heifers calved between Feb. 1 and Feb. 28, 2008
- KA011 - Early junior yearling heifers calved between Jan. 1 and Jan. 31, 2008

- Junior Champion Female Ribbon
- Reserve Junior Champion Female Ribbon
- KA012 - Late senior yearling heifers, calved between Nov. 1 and December 31, 2007
- KA013 - Early senior yearling heifers, calved between Sept. 1 and October 31, 2007
- Senior Champion Female Ribbon
- Reserve Senior Champion Female Ribbon
- GRAND CHAMPION FEMALE Banner
- RESERVE GRAND CHAMPION FEMALE Banner

(champions and reserve champions competing)

Any female that qualifies for female classes in the Association's standard classifications are not eligible to show in the cow/calf classes.

KA014 - Cow/Calf Class, cows three (3) years of age and younger, cows must be born Jan. 1, 2006 through August 31, 2007. Calf must be the cow's most recent natural calf and be born January 1, 2009 or after.

KA015 - Cow/Calf Class, cows four (4) years of age and older, cows must be born December 31, 2005 or earlier. Calf must be the cow's most recent natural calf and be born January 1, 2009 or after.

- Grand Champion Cow/Calf Pair Banner
- Reserve Grand Champion Cow/Calf Pair Banner

Grand and Reserve Grand Champion cow/calf pairs do not show for grand champion female and are ineligible to compete in the get-of-sire, junior get-of-sire and breeders six head classes.

KA016 - Junior bull calves, calved March 1, 2009 and after

KA017 - Junior bull calves, calved between January 1 and February 28, 2009

- Junior Bull Calf Champion Ribbon
- Reserve Junior Bull Calf Champion Ribbon

KA018 - Late senior bull calves, calved between November 1 and December 31, 2008

KA019 - Early senior bull calves, calved between September 1 and October 31, 2008

- Senior Bull Calf Champion Ribbon
- Reserve Senior Bull Calf Champion Ribbon

KA020 - Late summer yearling bulls, calved between July 1 and August 31, 2008

KA021 - Early summer yearling bulls, calved between May 1 and June 30, 2008

- Intermediate Champion Bull Ribbon
- Reserve Intermediate Champion Bull Ribbon

KA022 - April junior yearling bulls, calved between April 1 and April 30, 2008

KA023 - March junior yearling bulls, calved between March 1 and March 31, 2008

KA024 - Early junior yearling bulls, calved between January 1 and February 28, 2008

- Junior Champion Bull Ribbon
- Reserve Junior Champion Bull Ribbon

KA025 - Senior yearling bulls, calved between September 1 and December 31, 2007

KA026 - Summer senior yearling bulls, calved between May 1 and August 31, 2007

KA027 - Two year old bulls, calved between January 1 and April 30, 2007

- Senior Champion Bull Ribbon
- Reserve Senior Champion Bull Ribbon
- GRAND CHAMPION BULL Banner
- RESERVE GRAND CHAMPION BULL Banner

(champions and reserve champions competing)

KA028 - Produce of Dam: Two animals, either sex from one dam. Must be show in individual classes to be eligible. May be owned by more than one exhibitor.

KA029 - Get of Sire: Four animals by one sire shown in the above classes, both sexes represented

KA030 - Junior Get of Sire: Three animals by one sire, both sexes represented shown in classes 1, 2, 3, 4, 5, 6, 7 and 16, 17, 18, 19, 20, 21.

KA031 - Breeders Six Head: The exhibitor of the breeders six head must be breeder

and first owner, identified by the same member code for the animals exhibited. Cattle owned by other exhibitors may be included provided the exhibitor of the breeders six head is the breeder and first owner of the included animal(s). Animals must be exhibited in individual classes. Cattle bred and owned by a junior member(s) may be included if the exhibitor of the breeders six head is an individual or married couple and is the parent or legal guardian of the junior member(s).



BELTED GALLOWAY

"Competition Open To The World"

Exhibitors must be members in good standing of the Belted Galloway Society, Inc.

Animals must be registered in U.S. Belted Galloway Society Herd Book or Appendix, or Canadian Galloway Association Herd Book. Animals must be properly marked, in good physical condition (including but not limited to the absence of infectious conditions such as ringworm or warts) and typical of the breed in conformation.

Entries must include registration number of each animal entered. Original registration or recordation certificate must be presented at check-in to the superintendent for verification of entries.

Natural hair coat, trimmed for neatness only and properly shampooed, is expected. Judging will be based on all Belted Galloway breed characteristics.

Bulls over 18 months of age are required to wear nose rings. Unattended animals must be double-tied with halter plus neck rope or two halters, two ropes.

ALL OTHER RULES OF SHOW APPLY.

PREMIUMS	1stPlace \$75	2ndPlace \$65	3rdPlace \$55	4thPlace \$50
PREMIUMS	5thPlace \$40	6thPlace \$40	7thPlace \$35	8thPlace \$35
Division Champions \$50		Division Reserve Champions \$25		

Category B **BELTED GALLOWAY - Open Beef Cattle**

PUREBRED FEMALES

KA101 - Late Junior Heifer Calves, calved March 1, 2009 or after

KA102 - Junior Heifer Calves, calved January 1 - February 28, 2009

KA103 - Winter Heifer Calves, calved November 1 - December 31, 2008

KA104 - Senior Heifer Calves, calved September 1 - October 31, 2008

Champion Heifer Calf Ribbon

Reserve Champion Heifer Calf Ribbon

KA105 - Late Summer Yearling Heifers, calved July 1 - August 31, 2008

KA106 - Early Summer Yearling Heifers, calved May 1 - June 30, 2008

KA107 - Late Junior Yearling Heifers, calved between March 1 - April 30, 2008

KA108 - Early Junior Yearling Heifers, calved between January 1 - February 28, 2008

Junior Champion Heifer Ribbon

Reserve Junior Champion Heifer Ribbon

KA109 - Senior Heifers, calved September 30 - December 31, 2007

KA110 - 2 Year Old Heifers, calved October 1, 2006 - September 29, 2007

KA111 - 3 Year Old Cows, calved October 1, 2005 - September 30, 2006

KA112 - Dry Cows over 3 Years, calved before October 1, 2005

Senior Champion Heifer Ribbon

Reserve Senior Champion Heifer Ribbon

KA113 - Cow/Calf, cow must be owned by exhibitor. All calves must be born in 2008.

Calves are eligible for Heifer and Bull Classes. Cows cannot compete in any other class. Calves must be still nursing and may be asked to do so in the ring. All cows and calves to be shown on a halter. May be split into multiple classes by age or cow if enough entries are available.

GRAND CHAMPION FEMALE Banner
 RESERVE CHAMPION FEMALE Banner

PUREBRED MALES

KA114 - Early Junior Bull Calves, calved March 1, 2009 or after
 KA115 - Late Junior Bull Calves, calved January 1 - February 28, 2009
 KA116 - Winter Bull Calves, calved November 1 - December 31, 2008
 KA117 - Senior Bull Calves, calved September 1 - October 31, 2008
 Champion Bull Calf Ribbon
 Reserve Champion Bull Calf Ribbon
 KA118 - Late Summer Yearling Bulls, calved July 1 - August 31, 2008
 KA119 - Early Summer Yearling Bulls, calved May 1 - June 30, 2008
 KA120 - Late Junior Yearling Bulls, calved March 1 - April 30, 2008
 KA121 - Early Junior Yearling Bulls, calved January 1 - February 28, 2008
 Junior Champion Bull Calf Ribbon
 Reserve Junior Champion Bull Calf Ribbon
 KA122 - Senior Yearling Bulls, calved June 1 - December 31, 2007
 KA123 - Late Two-Year Old Bulls, calved October 1, 2006 - May 31, 2007
 Senior Champion Bull Ribbon
 Reserve Senior Champion Bull Ribbon
 GRAND CHAMPION BULL Banner
 RESERVE GRAND CHAMPION BULL Banner

GROUP CLASSES

KA125 - Get-of-Sire: 3 animals sired by one bull. All animals to be shown in individual classes to be eligible.
 KA126 - Best Pair of Weanlings: Both sexes represented, must be weaned and under one year of age.
 KA127 - Best Pair of Yearlings: Both sexes represented, must be over one year and under two years of age.
 KA128 - Best Six Head: Both sexes represented and show individually in classes above. Animals must be owned or co-owned by the exhibitor.



**CHAROLAIS SHOW
 R.O.E.**

"Competition Open To The World"

The North Carolina State Fair Open Charolais Show abides by the regulations and classifications provided by the American-International Charolais Association.

PREMIUMS 1stPlace \$75 2ndPlace \$65 3rdPlace \$55 4thPlace \$50
 PREMIUMS 5thPlace \$40 6thPlace \$40 7thPlace \$35 8thPlace \$35

Division Champions \$50 Division Reserve Champions \$25

Category C **CHAROLAIS - Open Beef Cattle**

KA201 -Spring Heifer Calves, calved after March 1, 2009
 KA202 -Junior Heifer Calves, calved between January 1 and February 28, 2009
 Junior Calf Champion Female Ribbon
 Reserve Junior Calf Champion Female... Ribbon
 KA203 -Heifers, Winter Calves, calved between November 1 and December 31, 2008
 KA204 -Heifers, Senior Calves, calved between September 1 and October 31, 2008
 Senior Calf Champion Female Ribbon
 Reserve Senior Calf Champion Female Ribbon
 KA205 -Late Summer Yearlings, Females calved between July 1 and August 31, 2008
 KA206 -Summer Yearlings, Females calved between May 1 and June 30, 2008

- Intermediate Champion Female Ribbon
- Reserve Intermediate Champion Female... Ribbon
- KA207 -Late Spring Yearling, Females calved between April 1 and April 30, 2008
- KA208 -Early Spring Yearling, Females calved between March 1 and March 31, 2008
- Junior Champion Female Ribbon
- Reserve Junior Champion Female Ribbon
- KA209 -Junior Yearlings, Females calved between January 1 and February 28, 2008
- KA210 -Senior Yearlings, Females calved between September 1 and December 31, 2007
- Senior Champion Female Ribbon
- Reserve Senior Champion Female Ribbon
- KA211 -Cow-Calf

Calf must be cow's natural calf, not embryo transplant. Calf to be no more than 250 days of age by day of show. Calf must be purebred and registered with AICA. No age restriction on cow. Calf not eligible to compete in individual calf classes if shown with dam. Pair is eligible for Grand or Reserve Grand Champion Female. The calf must have the opportunity to nurse. The judge may make his final placing based on this criteria. Cow and/or calf may be included in group class entries as individuals, not as a pair comprising a single animal unit

- GRAND CHAMPION FEMALE Banner
- RESERVE GRAND CHAMPION FEMALE Banner

KA212 -Spring Bull Calves, calved after March 1, 2009

KA213 -Bulls, Junior Calves, calved between January 1 and February 28, 2009

- Junior Calf Champion Bull Ribbon
- Reserve Junior Calf Champion Bull Ribbon

KA214 -Bulls, Winter Calves, calved between November 1 and December 31, 2008

KA215 -Bulls, Senior Calves, calved between September. 1 and October 31, 2008

- Senior Calf Champion Bull Ribbon
- Reserve Senior Calf Champion Bull Ribbon

KA216 -Bulls, Late Summer Yearlings, calved between July 1 and August 31, 2008

KA217 -Bulls, Summer Yearlings, calved between May 1 and June 30, 2008

- Intermediate Champion Bull Ribbon
- Reserve Intermediate Champion Bull Ribbon

KA218 -Bulls, Spring Yearling, calved between March 1 and April 30, 2008

KA219 -Bulls, Junior Yearlings, calved between January 1 and February 28, 2008

- Junior Champion Bull Ribbon
- Reserve Junior Champion Bull Ribbon

KA220 -Bulls, Senior Yearlings, calved between September 1 and December 31, 2007

KA221 -Bulls, Summer Senior Yearlings, calved between May 1 and August 31, 2007

KA222 -Two-Year Old Bulls, calved between January 1 and April 30, 2007

- Senior Champion Bull Ribbon
- Reserve Senior Champion Bull Ribbon
- GRAND CHAMPION BULL Banner
- RESERVE GRAND CHAMPION BULL Banner

KA223 -Produce of Dam - two animals, either sex from one dam. Must be shown in individual classes to be eligible. May be owned by more than one exhibitor.

KA224 -Junior Get-of-Sire: Three animals all by one sire, both sexes to be represented. May be owned by more than one exhibitor. All animals must be shown in individual classes to be eligible. Bulls from Classes KA212, KA213, KA214, KA215; Females from Classes KA210, KA202, KA203, and KA204.

KA225 -Get-of-Sire: Four animals all by one sire, both sexes to be represented. May be owned by more than one exhibitor. This Get must have a minimum of two animals born before Sept 1, 2005 for the group to be eligible for the Get-of-Sire competition. All animals must be shown in their classes to be eligible.

KA226 -Breeders Herd: Four animals, either sex, bred and owned by exhibitor. All animals must be shown in their individual classes to be eligible.

KA227 -Group of five Head. Five animals of either sex owned by exhibitor from either the Calf Classes, Junior Classes, the Senior Classes or a combination.

Note: Individual animals shown in all above group classes must have been entered and shown in one of the classes for single animals.



GELBVIEW SHOW

PREMIUMS	1stPlace \$75	2ndPlace \$65	3rdPlace \$55	4thPlace \$50
PREMIUMS	5thPlace \$40	6thPlace \$40	7thPlace \$35	8thPlace \$35

Division Champions \$50 Division Reserve Champions \$25

Balancer Pedigree or 75% Hybrid Pedigree

Category D - **GELBVIEW - Open Beef Cattle**

The Gelbvieh Show will be a "NO FIT" Show

KA301 - Spring Heifer Calves, calved March 1 and June 30, 2009

KA302 - Winter Heifer Calves, calved between January 1 and February 28, 2009

KA303 - Senior Heifer Calves, calved between September 1 and December 31, 2008

Champion Heifer Calf Ribbon

Reserve Champion Heifer Calf Ribbon

KA304 - Intermediate Heifer, calved between May 1 and August 31, 2008

KA305 - Junior Yearling Heifer, calved between January 1 and April 30, 2008

Immediate Champion Heifer Ribbon

Reserve Immediate Champion Heifer Ribbon

KA306 - Senior Yearling Heifer, calved between September 1 and December 31, 2007

Senior Champion Heifer Ribbon

Reserve Senior Champion Heifer Ribbon

KA307 - Cow/Calf, no age limits on cows **Cow-calf must be allowed to show for Grand Champion Female for a show to qualify as a Ring of Gold points show.*

Cow/Calf Champion Banner

Cow/Calf Reserve Champion Banner

GRAND CHAMPION FEMALE - Dotti Knost Award... Banner

RESERVE GRAND CHAMPION FEMALE Banner

KA308 - Spring Bull Calf, calved March 1 and June 30, 2009

KA309 - Winter Bull Calf, calved between January 1 and February 28, 2009

KA310 - Senior Bull Calf, calved between September 1 and December 31, 2008

Champion Bull Calf Ribbon

Reserve Champion Bull Calf..... Ribbon

KA311 - Intermediate Bull, calved between May 1 and August 31, 2008

KA312 -Junior Bull, calved between January 1 and April 30, 2008

Intermediate Champion Bull Ribbon

Reserve Intermediate Champion Bull Ribbon

KA313 - Senior Bull, calved between January 1 and December 31, 2007

Senior Champion Bull Ribbon

Reserve Senior Champion Bull Ribbon

GRAND CHAMPION BULL Banner

RESERVE GRAND CHAMPION BULL Banner

KA314 - Get-of-Sire (4-head)

KA315 - Best 4 head

AMERICAN HEREFORD ASSOCIATION HORNED AND POLLED REGIONAL SHOW

“Competition Open To The World”

Exhibitors in Hereford classes are subject to the Association's special rule on class qualification. Entries must be duly recorded with the American Hereford Association. Any animal without a legible tattoo will not be eligible for show competition.

All animals at all AHA sponsored shows must be officially recorded at show time to be eligible to show. An official AHA registry number at entry time will be required.

PREMIUMS	1stPlace \$75	2ndPlace \$65	3rdPlace \$55	4thPlace \$50
PREMIUMS	5thPlace \$40	6thPlace \$40	7thPlace \$35	8thPlace \$35
Division Champions	\$50 Division Reserve Champions \$25			

Category E HEREFORD - Open Beef Cattle

KA401 - Junior Heifer Calves, calved on or after March 1, 2009

KA402 - Junior Heifer Calves, calved January and February 2009

Champion Junior Heifer Calf (from the first prize calves in classes KA401 and KA402) Ribbon

Reserve Champion Junior Heifer Calf (from from classes KA401 and KA402) Ribbon

KA403 - Winter Heifer Calves, calved November and December 2008

KA404 - Senior Heifer Calves, calved September and October 2008

Champion Heifer Calf (from first prize females in KA403 and KA404) Ribbon

Reserve Champion Heifer Calf (from remaining first prize females plus second prize female from KA403 and KA404) Ribbon

KA405 - Late Summer Yearling Heifers, calved July and August 2008

KA406 - Early Summer Yearling Heifers, calved May and June 2008

KA407 - Spring Yearling Heifers, calved March and April 2008

Champion Intermediate Heifer (from first prize females KA405, KA406, KA407) Ribbon

Reserve Champion Intermediate Heifer (from remaining first prize females plus second prize female in the Intermediate Champion class) Ribbon

KA408 - Junior Yearling Heifers, calved January and February 2008

KA409 - Senior Yearling Heifers, calved September-December 2007

Champion Yearling Heifer (from first prize females in KA407 and KA408) Ribbon

Reserve Champion Yearling Heifer (from the remaining first prize females plus the second prize female in the Yearling

Champion Class) Ribbon

GRAND CHAMPION HEIFER Banner

RESERVE GRAND CHAMPION HEIFER Banner

KA410 - Cow/Calf: Any female older than above ages with a calf at side. Calf cannot be over 9 months of age. Calf is eligible for individual classes, but must be entered in appropriate class

Champion Cow/Calf Banner

Reserve Champion Cow/Calf Banner

- KA411 - Junior Bull Calves, calved on or after March 1, 2009
- KA412 - Junior Bull Calves, calved January and February 2008
 Champion Junior Bull Calf (from the first prize bulls in KA411 and KA412) Ribbon
 Reserve Champion Junior Bull Calf (from remaining first prize bulls plus the second prize bull in the Junior Calf Champion class Ribbon
- KA413 - Winter Bull Calves, calved November and December 2008
- KA414 - Senior Bull Calves, calved September and October 2008
 Champion Bull Calf (from the first prize bulls in KA413 and KA414) Ribbon
 Reserve Champion Bull Calf (from remaining first prize bulls plus the second prize bull in the Calf Champion class Ribbon
- KA415 - Late Summer Yearling Bulls, calved July and August 2008
- KA416 - Early Summer Yearling Bulls, calved May and June 2008
- KA417 - Spring Yearling Bulls, calved March and April 2008
- KA418 - Junior Yearling Bulls, calved January and February 2008
 Champion Yearling Bull (from the first prize bulls in KA415, KA416, KA417, KA418) Ribbon
 Reserve Champion Yearling Bull (from the remaining first prize bulls plus the second prize bull in the Yearling Champion class) Ribbon
- KA419 - Senior Yearling Bulls, calved July thru December 2007
- KA420 - Two-Year-Old Bulls, calved January thru June 2007
 Champion Senior Bull (from the first prize bulls in KA419 and KA420) Ribbon
 Reserve Champion Senior Bull (from the remaining first prize bull plus the second prize bull in the Senior Champion class) Ribbon
 GRAND CHAMPION BULL(selected from the Calf, Yearling and Senior Champions) Banner
 RESERVE GRAND CHAMPION BULL(from the remaining Calf, Yearling or Senior Champions plus the bull that stood Reserve to the Grand Champion) Banner
- KA421 - Get-of-Sire: Four animals shown in above single entry classes with both sexes represented and all to be progeny of one sire. All cattle exhibited in the Get-of-Sire must be owned by the exhibitor or a member of their immediate family. It is permissible to use either the cow or calf from a cow/calf pair for the get of sire.
- KA422 - Best Six Head: Owned by Exhibitor. (All animals must have been shown in their respective single entry classes and they must be owned by the exhibitor or by a member of his immediate family. A cow/calf will be considered as two head in the best six head class.)
- KA423 - Premier Exhibitor Banner
- KA424 - Premier Breeder Banner
- Awarded with the following point system: 1st place = 5 points, 2nd place = 4 points, 3rd place - 3 points, 4th place = 2 points and 5th place = 1 point. No points will be given for champions. Points will be awarded for the Get of Sire and Best Six Head for Premier Exhibitor and Get of Sire for Premier Breeder. The same scoring system as above will be used for awarding points for the group classes.



LIMOUSIN SHOW

“Competition Open To The World”

North American Limousin Foundation

Level III

RULES AND REGULATIONS

The North Carolina State Fair Open Limousin Show abides by the regulations and classifications provided by the North American Limousin Foundation.

PREMIUMS	1stPlace \$75	2ndPlace \$65	3rdPlace \$55	4thPlace \$50
PREMIUMS	5thPlace \$40	6thPlace \$40	7thPlace \$35	8thPlace \$35
Division Champions	\$50 Division Reserve Champions \$25			

Category F **LIMOUSIN - Open Beef Cattle**

- KA800 - Late Junior Heifer Calf, calved after March 1, 2009
- KA801 - Early Junior Heifer Calf, calved between January and February 28, 2009
- KA802 - Winter Heifer Calf, calved between November 1 and December 31, 2008
- KA803 - Senior Heifer Calf, calved between September 1 and October 31, 2008
 - Champion Heifer Calf Ribbon
 - Reserve Champion Heifer Calf Ribbon
- KA804 - Late Summer Yearling Female, calved between July 1 and August 31, 2008
- KA805 - Early Summer Yearling Female, calved between May 1 and June 30, 2008
- KA806 - Late Spring Yearling Female, calved between March 1 and April 30, 2008
- KA807 - Junior Yearling Female, calved between January 1 and February 28, 2008
 - Champion Intermediate Heifer Ribbon
 - Reserve Champion Intermediate Heifer Ribbon
- KA808 - Winter Yearling Female, calved between November 1 and December 31, 2007
- KA809 - Senior Yearling Female, calved between September 1 and October 31, 2007
- KA810 - Cow/Calf Pair: Cows with natural calf at side. Cow must be born on or before August 31, 2007 and be 75% Limousin or greater. Calf must be 87% Limousin or greater and not more than 250 days old on date of show
 - Senior Champion Female Ribbon
 - Reserve Senior Champion Female Ribbon
 - GRAND CHAMPION FEMALE Banner
 - RESERVE GRAND CHAMPION FEMALE Banner
- KA811 - Late Junior Bull Calf, calved after March 1, 2009
- KA812 - Early Junior Bull Calf, calved between January 1 - February 28, 2009
- KA813 - Winter Bull Calf, calved between November 1 and December 31, 2008
- KA814 - Senior Bull Calf, calved between September 1 - October 31, 2008
 - Champion Bull Calf Ribbon
 - Reserve Champion Bull Calf Ribbon
- KA815 - Late Summer Yearling Bull, calved between July 1 and August 31, 2008
- KA816 - Early Summer Yearling Bull, calved between May 1 and June 30, 2008
- KA817 - Late Spring Yearling Bull, calved between March 1 and April 30, 2008
- KA818 - Early Junior Yearling Bull, calved between January 1 and February 28, 2008
 - Champion Intermediate Bull Ribbon
 - Reserve Champion Intermediate Bull Ribbon
- KA819 - Winter Yearling Bull, calved between November 1 and December 31, 2007
- KA820 - Senior Yearling Bull, calved between September 1 and October 31, 2007
- KA821 - Two-Year-Old Bull, calved between July 1 and August 31, 2007
 - Senior Champion Bull Ribbon
 - Reserve Senior Champion Bull Ribbon

- GRAND CHAMPION BULL Banner
 RESERVE GRAND CHAMPION BULL Banner
 KA822 - Junior Get-of-Sire: 3 head shown in individual classes calved on or after
 September 1, 2008 (both sexes represented).
 KA823 - Senior Get-of-Sire: 4 head shown in individual classes any age. Both sexes
 represented.
 KA824 - Breeders Best 5 Head: 5 head shown in individual classes. Must be bred by
 and owned or co-owned by exhibitor. Either or both sexes represented.



RED ANGUS SHOW

"Competition Open To The World"

The Red Angus Show will be a "NO FIT" Show

The North Carolina State Fair Open Red Angus Show abides by the regulations and
 classifications provided by the Red Angus Association of America.

PREMIUMS	1stPlace \$75	2ndPlace \$65	3rdPlace \$55	4thPlace \$50
PREMIUMS	5thPlace \$40	6thPlace \$40	7thPlace \$35	8thPlace \$35
Division Champions \$50		Division Reserve Champions \$25		

25th Anniversary
Sponsored by Twin B Farm

Category G **RED ANGUS - Open Beef Cattle**

FEMALES

- KA501 - May Calves, calved May 1, 2009 and after
 KA502 - April Calves, calved between April 1 and April 30, 2009
 KA503 - March Calves, calved between March 1 and March 31, 2009
 KA504 - February Calves, calved between Feb. 1 and Feb. 28, 2009
 KA505 - January Calves, calved between January 1 and January 31, 2009
 Calf Champion (Class winners from A501, KA502, KA503,
 KA504, KA505) Ribbon & \$100
 Reserve Calf Champion (Remaining First Prize winners and Second Prize
 winner from Calf Champion Class) Ribbon & \$50
 KA506 - Winter Calves, calved between Nov. 1 and Dec. 31, 2008
 KA507 - Senior Calves, calved between Sept.1 and Oct. 31, 2008
 KA508 - Summer Yearlings, calved between May 1 and August 31, 2008
 Intermediate Champion (Class winners from KA506, KA507,
 and KA508) Ribbon & \$100
 Reserve Intermediate Champion (Remaining First Prize
 winners and Second Prize winners from Intermediate
 Champion class) Ribbon & \$50
 KA509 - April Spring Yearlings, calved between April 1 and April 30, 2008
 KA510 - March Yearlings, calved between March 1 and March 31, 2008
 KA511 - February Yearlings, calved between Feb. 1 and Feb. 28, 2008
 KA512 - January Junior Yearlings, calved between January 1 and January 31, 2008
 Junior Champion (Class winners from KA509, KA510, KA511,
 KA512) Ribbon & \$100
 Reserve Junior Champion (Remaining First Prize winners and Second
 Prize winner from Junior Champion Class) Ribbon & \$50
 KA513 - Senior Yearlings, calved between Sept.1 and Dec. 31, 2007
 KA514 - Two-Year Female with Calf - Cow must be born after January 2007. Calf must
 be under 250 days of age and still nursing
 KA515 - Mature Cow & Calf - cow must be born before January 2007. Calf must be
 under 250 days of age and still nursing.

Senior Champion (Class winners from KA513, KA514, KA515) Ribbon & \$100
 Reserve Senior Champion (Remaining First Prize winners and Second Prize winner from Senior Champion Class)..... Ribbon & \$50
 GRAND CHAMPION FEMALE (Calf, Intermediate, Junior & Senior Champions) Banner & \$250
 RESERVE GRAND CHAMPION FEMALE (Remaining age Champions and Reserve Age Champion to the Grand Champion)..... Banner & \$150

BULLS

KA516 - May Calves, calved May 1, 2009 and after
 KA517 - April Calves, calved April 1 and April 30, 2009
 KA518 - March Calves, calved between March 1 and March 31, 2009
 KA519 - February Calves, calved between Feb. 1 and Feb. 28, 2009
 KA520 - January Calves, calved between January 1 and January 31, 2009
 Calf Champion (Class winners from KA516, KA517, KA518, KA519, KA520) Ribbon & \$100
 Reserve Calf Champion (Remaining First Prize winners and Second Prize winner from Calf Champion Class) Ribbon & \$50

KA521 - Winter Calves, calved between Nov. 1 and Dec. 31, 2008
 KA522 - Senior Calves, calved between Sept.1 and Oct. 31, 2008
 KA523 - Summer Yearlings, calved between May 1 and August 31, 2008
 Intermediate Champion (Class winners from KA521, KA522, and KA523) Ribbon & \$100
 Reserve Intermediate Champion (Remaining First Prize winners and Second Prize winners from Intermediate Champion class) Ribbon & \$50

KA524 - April Spring Yearlings, calved between April 1 and April 30, 2008
 KA525 - March Yearlings, calved between March 1 and March 31, 2008
 KA526 - February Yearlings, calved between Feb. 1 and Feb. 28, 2008
 KA527 - January Junior Yearlings, calved between January 1 and January 31, 2008
 Junior Champion (Class winners from KA525, KA525, KA526, KA527) Ribbon & \$100
 Reserve Junior Champion (Remaining First Prize winners and Second Prize winner from Junior Champion Class) Ribbon & \$50

KA528 - Senior Yearlings, calved between Sept.1 and Dec. 31, 2007
 KA529 - Summer Senior Yearling, calved between May 1 and Aug. 31, 2007
 KA530 - Two-Year Old, calved between Jan. 1 and April 30, 2007
 Senior Champion (Class winners from KA528, KA529, KA530) Ribbon & \$100
 Reserve Senior Champion (Remaining First Prize winners and Second Prize winner from Senior Champion Class)..... Ribbon & \$50
 GRAND CHAMPION BULL (Calf, Intermediate, Junior & Senior Champions) Banner & \$250
 RESERVE GRAND CHAMPION BULL (Remaining age Champions and Reserve Age Champion to the Grand Champion)..... Banner & \$150

KA531 - Senior Get-of-Sire - Four animals by the same sire, both sexes represented, need not be owned by the exhibitor. All animals must have been shown in their respective classes.
 KA532 - Junior Get-of-Sire - Three animals by the same sire, both sexes represented, need not be owned by the exhibitor. Entries must have been calved on or after September 1, 2008. All animals must have been shown in their respective classes.
 KA533 - Produce-of-Dam - Two animals, either or both sexes, both shown in their respective classes. Animals shown in this class need not be owned by the exhibitor.
 KA534 - Premier Breeders Class - Four animals, bred and owned by the exhibitor or member of immediate family, either or both sexes represented. Each animal must have been shown in their respective classes.

KA535 - Premier Exhibitor Class - Will be computed from exhibitor's placement in individual classes only as follows: 3 points for each First; 2 points for each Second; 1 point for each Third. Maximum number of placements used to determine winner shall be limited to 5. (In case of tie, group class placements will be used to determine the winner).

GROUND RULE

In our Standard Show Classification only the Premier Breeders Class specifies "owned by the exhibitor." The other group classes need not be owned by exhibitor, therefore cannot be used to break ties.
 To correct the possibility of a tie for Premier Exhibitor Class, where a tie exists through 5 placements, and neither exhibitor has an entry in the Premier Breeder Class, additional placements (beyond the stated 5 limitation) in the individual classes will be used, but only to the point where the tie is broken.



SANTA GERTRUDIS SHOW

"Competition Open To The World"

The North Carolina State Fair Open Santa Gertrudis Show abides by the regulations and classifications provided by the Santa Gertrudis Breeders International.

PREMIUMS	1stPlace \$75	2ndPlace \$65	3rdPlace \$55	4thPlace \$50
PREMIUMS	5thPlace \$40	6thPlace \$40	7thPlace \$35	8thPlace \$35
Division Champions	\$50 Division Reserve Champions \$25			

Category G **SANTA GERTRUDIS - Open Beef Cattle**

- KA601 - Late Junior Heifer Calf, calved March 1, 2009 and later
- KA602 - Early Junior Heifer Calf, calved between January 1 and February 28, 2009
- KA603 - Late Senior Heifer Calf, calved between November 1 and December 31, 2008
- KA604 - Early Senior Heifer Calf, calved between September 1 and October 31, 2008
 - Champion Heifer Calf (KA601, KA602, KA603, KA604)..... Ribbon
 - Reserve Champion Heifer Calf Ribbon
- KA605 - Late Summer Yearling Heifer, calved between July 1 and August 31, 2008
- KA606 - Early Summer Yearling Heifer, calved between May 1 and June 30, 2008
- KA607 - Late Junior Yearling Heifer, calved between March 1 and April 30, 2008
- KA608 - Early Junior Yearling Heifer, calved between January 1 and February 28, 2008
 - Champion Yearling Heifer (KA605, KA606, KA607, KA608) Ribbon
 - Reserve Champion Yearling Heifer Ribbon
- KA609 - Late Senior Yearling Heifer, calved between October 1 and December 31, 2006
- KA610 - Early Senior Yearling Heifer, calved between July 1 and September 30, 2007
- KA611*- Late Two-Year Old Heifer, calved between April 1 and June 30, 2006
- KA612*- Early Two-Year Old Heifer, calved between January 1 and March 31, 2007
 - Champion Senior Female (KA609, KA610, KA611, KA612) Ribbon
 - Reserve Champion Senior Female Ribbon
 - GRAND CHAMPION FEMALE Banner
 - RESERVE GRAND CHAMPION FEMALE Banner
 - Best of Polled Female, must be a smooth polled with no hornly tissue Banner
- KA613 - Late Junior Bull Calf, calved March 1, 2009 or later
- KA614 - Early Junior Bull Calf, calved between January 1 and February 28, 2009
- KA615 - Late Senior Bull Calf, calved between November 1 and December 31, 2008
- KA616 - Early Senior Bull Calf, calved between September 1 and October 31, 2008

- Champion Bull Calf (KA613, KA614, KA615, KA616) Ribbon
 - Reserve Champion Bull Calf Ribbon
 - KA617 - Late Summer Yearling Bull, calved between July 1 and August 31, 2008
 - KA618 - Early Summer Yearling Bull, calved between May 1 and June 30, 2008
 - KA619 - Late Junior Yearling Bull, calved between March 1 and April 30, 2008
 - KA620 - Early Junior Yearling Bull, calved between January 1 and February 28, 2008
 - Champion Yearling Bull (KA617, KA618, KA619, KA620) ... Ribbon
 - Reserve Champion Yearling Bull Ribbon
 - KA621 - Late Senior Yearling Bull, calved between October 1 and December 31, 2007
 - KA622 - Early Senior Yearling Bull, calved between July 1 and September 30, 2007
 - KA623 - Late Two-Year-Old Bull calved between April 1 and June 30, 2007
 - KA624 - Early Two-Year-Old Bull calved between January 1 and March 31, 2007
 - KA625 - Aged Bull, calved between July 1 and December 31, 2006
 - Champion Senior Bull (KA621, KA622, KA623, KA624, KA625) Ribbon
 - Reserve Champion Senior Bull Ribbon
 - GRAND CHAMPION BULL Banner
 - RESERVE GRAND CHAMPION BULL Banner
 - Best of Polled Male, must be smooth polled with no horny tissue Banner
 - KA626 - Produce-of-Dam: Two exhibited offspring, the produce of one cow, within the age limits of individual classes.
 - KA627 - Get-of-Sire: Three animals all by one sire and from at least two dams, both sexes represented, within age limits of individual classes, and must have been exhibited in their respective classes.
- *=Must have produced a calf or be safe in calf as verified by a graduate veterinarian.



SIMMENTAL SHOW

"Competition Open To The World"

PREMIUMS	1stPlace \$75	2ndPlace \$65	3rdPlace \$55	4thPlace \$50
PREMIUMS	5thPlace \$40	6thPlace \$40	7thPlace \$35	8thPlace \$35
Division Champions \$50 Division Reserve Champions \$25				

Have to be a 3/4 blood or more to show

Category I **SIMMENTAL - Open Beef Cattle**

- KA701 -HEIFERS, Spring Calves, calved March 1, 2009 or after
- KA702 -HEIFERS, Junior Calves, calved between January 1 and February 28, 2009
- KA703 -HEIFERS, Winter Calves, calved between November 1 and December 31, 2008
- KA704 -HEIFERS, Senior Calves, calved between September 1 and October 31, 2008
- Champion Heifer Calf Ribbon
- Reserve Champion Heifer Calf, 1st & 2nd prize winners of KA701, KA702, KA703, KA704 compete Ribbon
- KA705 -HEIFER, Late Summer Yearlings, calved between July 1 and August 31, 2008
- KA706 -HEIFER, Early Summer Yearlings, calved between May 1 and June 30, 2008
- KA707 -HEIFER, Late Junior Yearlings, calved between March 1 and April 30, 2008
- Junior Champion Heifer Ribbon
- Reserve Junior Champion Heifer, 1st & 2nd prize winners of KA705, KA706, KA707 compete Ribbon
- KA708 -HEIFERS, Early Junior Yearlings, calved between Jan. 1 and Feb. 28, 2008
- KA709 -HEIFERS, Senior Yearlings, calved between Sept. 1 and December 31, 2007
- Senior Champion Heifer Ribbon
- Reserve Senior Champion Heifer, 1st & 2nd prize winners of KA708, KA709 compete Ribbon

- GRAND CHAMPION HEIFER Banner
 RESERVE GRAND CHAMPION HEIFER, Calf, Junior & Senior Champions
 and Reserve Champions compete Banner
- KA710 -Cow-Calf: The calf must be cow's natural calf, not embryo transplant. Calf must be no more than 250 days of age by day of show. No age restriction on cow. Calf is not eligible to compete in individual classes if shown with dam. The pair is NOT eligible for Grand Champion or Reserve Champion female. The calf must have the opportunity to nurse.
- KA711 -BULLS, Spring Calves, calved March 1, 2009 or after
- KA712 -BULLS, Junior Calves, calved between January 1 and February 28, 2009
- KA713 -BULLS, Winter Calves, calved between November 1 and December 31, 2008
- KA714 -BULLS, Senior Calves, calved between September 1 and October 31, 2008
 Champion Bull Calf Ribbon
 Reserve Champion Bull Calf, 1st & 2nd prize winners of KA711,
 KA712, KA713 & KA714 compete Ribbon
- KA715 -BULLS, Late Summer Yearlings, calved between July 1 and August 31, 2008
- KA716 -BULLS, Early Summer Yearlings, calved between May 1 and June 30, 2008
- KA717 -BULLS, Late Junior Yearlings, calved between March 1 and April 30, 2008
- KA718 -BULLS, Early Junior Yearlings, calved between January 1 and February 28, 2008
 Junior Champion Bull Ribbon
 Reserve Junior Champion Bull, 1st & 2nd prize winners of KA715, KA716,
 KA717, & KA718 compete Ribbon
- KA719 -BULLS, Senior Yearlings, calved between September 1 and December 31, 2007
- KA720 -BULLS, Late Two-Year Olds, calved between May 1 and Aug. 31, 2007
- KA721 -BULLS, Early Two-Year Olds, calved between January 1 and April 30, 2007
 Senior Champion Bull Ribbon
 Reserve Senior Champion Bull, 1st & 2nd prize winners of KA719, KA720,
 & KA721 compete Ribbon
- GRAND CHAMPION BULL Banner
 RESERVE GRAND CHAMPION BULL Calf, Junior and Senior Champions
 and Reserve Champions compete Banner
- KA722 -Produce of Dam: Two animals, either sex from one dam. Must be shown in individual classes to be eligible. May be owned by more than one individual.
- KA723 -Get-of-Sire: Four animals, both sexes represented, sired by one bull, all animals owned by exhibitors. All animals to be shown in individual classes to be eligible.
- KA724 -Junior Get-of-Sire: Three calves (Senior, Winter, Junior) by one sire; both sexes to be represented. All animals to be owned by exhibitor. Eligible for Get-of-Sire Class. All animals to be shown in individual classes to be eligible.
- KA725 -Best Five Head: Owned by exhibitor. All animals must be shown in individual classes to be eligible.
 Champion Pair "Tar Heel" Heifers Banner
 Reserve Champion Pair "Tar Heel" Heifers Ribbon
 Champion Pair "Tar Heel" Bulls Banner
 Reserve Champion Pair "Tar Heel" Bulls Ribbon
 Premier Exhibitor: Computed from winnings: 3 points for the first prize;
 2 points for second prize, and 1 point for the third prize. No points given for sale animal classes. Banner

ALL OTHER BREEDS SHOW

"Competition Open To The World"

All entries must be registered in a recognized breed association. Original certificate of registry must be available on request. All entries must have a legible tattoo or brand corresponding with registration certificate for that individual animal.

PREMIUMS	1stPlace \$75	2ndPlace \$65	3rdPlace \$55	4thPlace \$50
PREMIUMS	5thPlace \$40	6thPlace \$40	7thPlace \$35	8thPlace \$35

Division Champions \$50 Division Reserve Champions \$25

Category J **ALL OTHER BREEDS - Open Beef Cattle**

- KA901 -HEIFERS, calved March 1, 2009 or after
- KA902 -HEIFERS, calved between January 1 and February 28, 2009
- KA903 -HEIFERS, calved between November 1 and December 31, 2008
- KA904 -HEIFERS, calved between September 1 and October 31, 2008
- Champion Heifer Calf Ribbon
- Reserve Champion Heifer Calf Ribbon
- KA905 -HEIFER, calved between July 1 and August 31, 2008
- KA906 -HEIFER, calved between May 1 and June 30, 2008
- KA907 -HEIFER, calved between March 1 and April 30, 2008
- Champion Junior Yearling Heifer Ribbon
- Reserve Champion Junior Yearling Heifer Ribbon
- KA908 -HEIFERS, calved between January 1 and February 28, 2008
- KA909 -HEIFERS, calved between September 1 and December 31, 2007
- KA910 -Cow/calf, first calf heifers 30 months old or less, natural calf no more than 250 days old
- KA911 -Cow/calf, mature cows, natural calf no more than 250 days old
- Champion Senior Yearling Heifer Ribbon
- Reserve Champion Senior Yearling Heifer Ribbon
- GRAND CHAMPION FEMALE Banner
- RESERVE GRAND CHAMPION FEMALE Banner
- KA912 -BULLS, calved March 1, 2009 or after
- KA913 -BULLS, calved between January 1 and February 28, 2009
- KA914 -BULLS, calved between November 1 and December 31, 2008
- KA915 -BULLS, calved between September 1 and October 31, 2008
- Champion Bull Calf Ribbon
- Reserve Champion Bull Calf Ribbon
- KA916 -BULLS, calved between July 1 and August 31, 2008
- KA917 -BULLS, calved between May 1 and June 30, 2008
- KA918 -BULLS, calved between March 1 and April 30, 2008
- Junior Champion Bull Ribbon
- Reserve Junior Champion Bull Ribbon
- KA919 -BULLS, calved between January 1 and February 28, 2008
- KA920 -BULLS, calved between September 1 and December 31, 2007
- KA921 -BULLS, calved between May 1 and Aug. 31, 2007
- KA922 -BULLS, calved between January 1 and April 30, 2007
- Senior Champion Bull Ribbon
- Reserve Senior Champion Bull Ribbon
- GRAND CHAMPION BULL Banner
- RESERVE GRAND CHAMPION BULL Banner
- KA923 -Get of Dam: three animals from one dam
- KA924 -Breeders Best Four Head: four animals owned or co-owned by one exhibitor

— ENTRIES CLOSE SEPTEMBER 15, 2009 —
DEPT. K
Subdepartment B - Feeder Calf Show
TOTAL PREMIUMS OFFERED - \$1,480

SUPERINTENDENT: BENCARPENTER-NCDA&CS

JUDGE: JEROME SETTLES-Hoskins, NE



Health Regulations - see page 89
RULES AND REGULATIONS

CHECK IN: Calves in the individual and pen classes will be weighed and tagged prior to 5:00 p.m., Thursday, October 15, 2009. Calves must be in place by 5:00 p.m.

Animals will not be allowed to enter the barns until inspected and passed by health officials. An approval card will be issued after inspection, prior to entering the barn.

SHOW DATE: The individual calf show will begin at 2:00 p.m., Friday, Oct. 16, 2009.

RELEASE TIME: Calves will be released at 10:00 p.m., Saturday, Oct. 17, 2009. All cattle must be removed from the barn by 12:00 p.m. on Sunday.

1. Open to North Carolina residents only.
2. Only steer calves without horns are eligible to show. Calves must be completely healed from dehorning and castration.
3. Calves must be born in the fall of 2008 through spring of 2009. Calves must weigh between 300 pounds and 800 pounds to be eligible to show.
4. Each exhibitor is limited to two individual calves. Calves will be divided into classes by weight. No more than ten calves will be shown per class. Calves in individual classes will be shown at halter.
5. Each exhibitor is limited to two pens of calves. Pens of three will be exhibited in two weight groups. Calves in the pens of three will be weighed individually and tagged during check-in. They will be shown by weight groups in the show ring at halter.
6. Calves shown in the individual classes will not be eligible for competition in the pen classes.
7. Closing date for entries will be September 15, 2009
8. Calves will be for exhibit and show only.
9. Stall Fee: Individual - \$5.00 Pen of Three - \$7.00.

FEEDER CALF CLASSES

PREMIUMS	1stPlace \$200	2ndPlace \$175	3rdPlace \$150	4thPlace \$125	5thPlace \$100
PREMIUMS	6thPlace \$75	7thPlace \$75	8thPlace \$75	9thPlace \$75	10Place \$75

Category A **PEN OF THREE FEEDER CALF**

KB1001 Pen of Three

GRAND CHAMPION PEN Pewter Plate-Banner

RESERVE GRAND CHAMPION PEN Pewter Plate-Banner

PREMIUMS	1stPlace \$125	2ndPlace \$110	3rdPlace \$100	4thPlace \$90	5thPlace \$80
PREMIUMS	6thPlace \$70	7thPlace \$60	8thPlace \$50	9thPlace \$40	10Place \$30

Category B **INDIVIDUAL FEEDER CALF**

KB1002 Individual Feeder Calf - Classes will be determined by weight with no more than 10 animals per class

GRAND CHAMPION INDIVIDUAL Pewter Plate-Banner

RESERVE GRAND CHAMPION INDIVIDUAL Pewter Plate-Banner

— ENTRIES CLOSE SEPTEMBER 15, 2009 —

DEPT. K

Subdepartment C - Jr. Market Steer Show

TOTAL PREMIUMS OFFERED - \$14,805

SUPERINTENDENT: BEN CARPENTER-NCDA&CS

JUDGE: JEROME SETTLES-Hoskins, NE

AUCTIONEER: RONNIE POWELL, Smithfield, NC



Health Regulations - see page 89

RULES AND REGULATIONS

Exhibitors are required to send in the Declaration of Ownership which may be found on back of the Livestock Entry Form

CHECK-IN: All steers will be check in between the hours of 10:00 a.m. to 3:00 p.m. Thursday, October 15, 2009. Steers will be weighed and may be mouthed, ear-tagged, re-tattooed, bled, urine sampled, or nose printed during check-in at the west side of the Graham Building. Steers can have two permanent teeth, all other teeth must be baby teeth and in place. Stall assignments will be made starting at 9:00 a.m. Wednesday, October 14, 2009, or as soon as the barn is ready. Animals will not be allowed to enter the barn until inspected and passed by health officials. An approval card to the superintendent will be issued after inspection, prior to entering the barn and receiving stall assignments.

SHOW DATE: Friday, October 16, 2009, 9:00 a.m.

RELEASE TIME: Exhibitors will furnish feed for all their animals during the Fair until animals are turned over to the buyers at 8:00 a.m., Sunday, October 18, 2009. All animals and equipment must be removed from the barn by 12:00 p.m.

1. Open to North Carolina residents 18 years of age and younger as of January 1, 2009, and able to show the animal on their own. Exhibitors are allowed to enter at tagging 4 steers - an exhibitor may show a maximum of 2 of these steers at the NC State Fair. No additional entries will be allowed. Each steer must be listed individually and designated if the steer is eligible to be shown in the NC 1 competition. Steers must be checked by NCDA&CS representatives at designated checkpoints during the month of May 2009. Steers will have hair samples taken for DNA analysis and may be identified by tattoo, ear tag, microchip or nose print. The initial identification will be done at NCDA&CS expense, however, the owner will be responsible for expenses in reinstalling and lab verifying the animal. *Steers not checked at designated points in May, will not be eligible to show. All officially tagged steers are automatically entered in the 2009 NC State Fair (an entry form by 9/15 WILL NOT BE REQUIRED).*
2. Steers must be in possession of exhibitor by May 16, 2009. Steers may be shown in county or district shows within the State of North Carolina prior to being shown at the N.C. State Fair. Any exhibitor may exhibit out-of-state upon written approval by the superintendent and only when the steer is exhibited in the North Carolina resident's name. Otherwise, all steers must be fed in North Carolina from May 16, 2009 to October 15, 2009 by the exhibitor.
3. If a junior has more than one steer in a class, the other steer must be shown by a junior (must be a resident of North Carolina) approved by the show superintendent.
4. **NEW RULE:** Each entry must weigh between 1,000 lbs. to 1,400 lbs., and one reweigh will be allowed during check in hours. **Calves will be weighed immediately after leaving the show ring**, and will be allowed for 4% of weigh-in weight. Any calves that do not go directly to the scales will forfeit premiums. Any calves that fall outside the 4% will forfeit premiums. Calves will still go on the truck, and will not compete in the carcass contest.

5. Classes will be broken by weight so that a relatively equal number of steers are in each class. Any steer not passing the proper tests (urine sample, blood, nose print) will be disqualified.
6. Steers must be halter broken and dehorned. Unruly animals which may endanger the safety of exhibitors may be asked to leave the ring. Only one exhibitor will be allowed in the show ring. The entered exhibitor must be able to handle the animal or will be asked to leave the show ring.
7. Steer exhibitors will be allowed to use ALL fitting products.
8. Following completion of the show on October 16, and continuing until steers are released on Sunday, October 18, the steers must remain in the barn between the hours of 9:00 a.m. and 5:00 p.m. The Grand Champion, Reserve Grand Champion, and NC 1 steers will not be released and will be tied in an area designated by the livestock department.
9. Market steers will report for loading on Sunday, October 18, 2009 at 8:00 a.m.
10. All exhibitors are automatically entered in the Jr. Beef Showmanship Competition. Refer to the Showmanship Award section under Jr. Beef Heifer. All exhibitors receiving a Showmanship Pin in this division, are eligible to return for the Showmanship Championship. A separate Showmanship Championship will be immediately following the last class in the Jr. Beef Heifer Show.
11. Any artificial means of removing or remedying physical defects or conformation in exhibition animals, including the use of steroids and other drugs, as well as lifting, dyeing or filling under the skin, will be considered fraud and deception. The North Carolina State Fair Management reserves the right to test the grand and reserve champion steer, and to conduct other random testing as deemed appropriate. Any steer not passing the proper tests will be disqualified and all premiums will be forfeited. Exhibitors involved in any such treatment will be barred from exhibition at this Fair, and all Fairs holding membership in the International Association of Fairs and Exposition will be notified.
12. The Superintendent or other NCSF Livestock Show Official reserves the right to inspect the cattle premises at any time between May 16 and October 15, 2009. Any exhibitor/animal found in violation of Rule #2 will be ineligible to compete at the 2009 North Carolina State Fair, and may be subject to an additional probationary period.
13. Any exhibitor or his representative who interferes with or displays disrespect to a judge, official, or the fair (at the discretion of the Superintendent) could forfeit any premiums or monies earned and/or are subject to other penalties assessed by the North Carolina State Fair.
14. The NC State Fair Management reserves the right to test any and all steers, and to conduct random testing as deemed appropriate.
15. Any question not covered by these rules will be ruled on by the Superintendent.
EXCEPT AS NOTED, ALL GENERAL RULES OF THE FAIR AND OF THE LIVESTOCK DIVISION WILL APPLY AND GOVERN THIS DEPARTMENT

RULES ON ENTERING:

1. Entries will be made at checkin in May. A signed Code of Ethics form will be required by May 16, 2009. Sign at checkin or mail to the State Fair office.
2. Entries must include each exhibitor's name, full mailing address, phone number, exhibitor's SS#, county, and number of animals to be entered.

NC 1 JUNIOR MARKET STEER

NC 1 steers must have been bred, born and raised in North Carolina. NC 1 steer designation must be done during steer checkin and tagging. NC 1 designation will close at the time the last steer is tagged. Verification documentation must be provided to NCDA/NC State Fair livestock officials by May 16, 2009. Verification may include owner/breeder records, AI service dates, embryo verification, herd record books, DNA samples of sire or dam, and any other verification documents. The livestock director of the NC State Fair will make the

final determination of NC 1 steers. Steers born on or after August 1, 2008 will be required to be age and source verified by NCDA&CS officials. The highest placing qualified NC 1 steer will be recognized in each class at the Jr. Market Steer Show. These steers will have the opportunity to show for the NC 1 Champion following the selections of Grand and Reserve Jr. Market Steer. However, if the Grand or Reserve Jr. Market Steer is a qualified NC 1 steer, that steer will automatically become NC 1 Champion. The exhibitor of Champion NC 1 steer will receive a \$250 premium and plate, and will be sold at the "Sale of Champions" on Saturday. The producer of the Champion NC 1 steer will receive a plaque at the 2010 N.C. Cattlemen's Conference. Further, the producer of the steer, recognized as the owner of the bred female at the time of calving, must be a current member of the N.C. Cattlemen's Association at the time of the 2009 State Fair. Exhibitors and/or producers found misrepresenting the qualifications of a steer in this competition shall be barred from future competition.

JUNIOR MARKET STEER SHOW CLASSES

(To Be Shown At Halter)

THE GRAND CHAMPION AND RESERVE GRAND CHAMPION JR. MARKET STEER WILL BE SOLD TO THE DESIGNATED PACKER

Dept. will be "K", Subdept. "C", then class number. *Disregard category letter.*

EXAMPLE of an entry - (KC2001 would be an entry in the Jr. Mkt. Steer Show)

PREMIUMS	1stPlace \$150	2ndPlace \$145	3rdPlace \$140	4thPlace \$135	5thPlace \$130
	6thPlace \$125	7thPlace \$120	8thPlace \$115	9thPlace \$110	10thPlace \$105

Category A **JUNIOR MARKET STEERS**

KC2001 - Classes will be determined by weight with no more than 10 animals per class

GRAND CHAMPION JUNIOR MARKET STEER

RESERVE GRAND CHAMPION JUNIOR MARKET STEER

CHAMPION N.C. 1 JUNIOR MARKET STEER

PREMIUMS GRAND CHAMPION JR. MARKET STEER \$100 (Banner and Plate)

PREMIUMS RESERVE GRAND CHAMPION JR. MARKET STEER \$50 (Banner and Plate)

PREMIUMS CHAMPION N.C. 1 JR. MARKET STEER \$250 (Plate)

SHOWMANSHIP - See Jr. Heifer section

PREMIUMS	1stPlace \$750	2ndPlace \$600	3rdPlace \$500	4thPlace \$400	5thPlace \$350
	6thPlace \$300	7thPlace \$250	8thPlace \$200	9thPlace \$150	10thPlace \$100
	11thPlace \$75	12thPlace \$75	13thPlace \$50	14thPlace \$50	15thPlace \$50

Category B **JUNIOR MARKET STEER CARCASS CLASS**

KC2002 - All market steers that are sold to the designated packer will automatically be entered into the Market Steer Carcass class. Class placings will be determined by carcass value index according to the pricing grid of the selected packer on the day of harvest. The exhibitor of the Grand Champion and Reserve Grand Champion Carcass will be recognized in the 2009 NCSF premium book.

GRAND CHAMPION JUNIOR MARKET STEER CARCASS

RESERVE GRAND CHAMPION JUNIOR MARKET STEER CARCASS

PREMIUMS GRAND CHAMPION JR. MKT. STEER CARCASS \$750 (Banner)

PREMIUMS RESERVE GRAND CHAMPION JR. MKT. STEER CARCASS \$600 (Banner)

CONGRATULATIONS TO THE 2008 CHAMPIONS

Grand Champion Jr. Market Steer Carcass - Avery Faulkner, LaGrange

Reserve Grand Champion Jr. Market Steer Carcass - Robert Fulton, Sanford

Mileage Payments

The State Fair Management will pay mileage compensation for animals exhibited in the Junior Steer Show as outlined here. Payment will be made for each animal based on the distance (one-way) between the county seat of the county involved and Raleigh. For computing mileage, the official Highway Map issued by the State Department of Transportation will be used. Payments will be made on the basis of \$.50 per mile per animal.

MILEAGE \$0.50

— ENTRIES CLOSE SEPTEMBER 15, 2009 —
DEPT. K
Subdepartment D - Jr. Beef Heifer Show
TOTAL PREMIUMS OFFERED - \$17,350

SUPERINTENDENT: LEE HOLLOWELL-NCDA&CS

JUDGES: JEROME SETTLES-Hoskins, NE
KENT STANFORD-Pell City, AL

Health Regulations - see page 89

RULES AND REGULATIONS


**Exhibitors are required to send in the Declaration of Ownership
which may be found on back of the Livestock Entry Form**

CHECK IN: All heifers accepted must be **checked in** between the hours of 1 p.m. to 5 p.m., Thursday, October 15, 2009. Heifers will be checked for tattoo against registration papers. Registration papers must accompany all breeds except those entered in the commercial classes. Each purebred heifer must have permanent identification per respective association rules, either tattoo or brand. NC State Fair reserves the right to inspect tattoos and/or brands at any time. The readability of the tattoo and/or brand is the sole responsibility of the exhibitor. All heifers entered are subject to being mouthed. Stall assignments will be made starting at 9:00 a.m. Wednesday, October 14, 2009, or as soon as the barn is ready. Animals will not be allowed to enter the barn until inspected and passed by health officials. An approval card to the superintendent will be issued after inspection, prior to entering the barn and receiving stall assignments.

SHOW DATE: Heifer show will be held on Friday, October 16 beginning at 2:00 p.m. and Saturday, October 17 beginning at 8:00 a.m. **See Show Order for breeds and times.**

RELEASE TIME: Exhibitors will furnish feed for all their animals during the Fair until animals are released at 10:00 p.m., Saturday, October 17. All cattle must be removed from the barn by 12:00 p.m. on Sunday.

1. Heifers must be in the exhibitors care and possession by July 15, 2009. Ownership by exhibitors is not required; however, a letter from the owner certifying that the heifer has been under the care of the exhibitor **MUST** accompany the completed entry form. If letter is not present, the heifer is not entered. Heifers may be shown in county or district shows within the state of North Carolina prior to being shown at the N. C. State Fair in the N. C. State Fair exhibitor name. An exhibitor may exhibit out-of-state upon written approval by the superintendent, and only when the heifer is exhibited in the North Carolina resident's name. Otherwise, all heifers exhibited at the 2009 N. C. State Fair Junior Beef Heifer Show must stay with the exhibitor from July 15, 2009 to October 15, 2009. The Superintendent or other NCSF Livestock Show Official reserves the right to inspect the cattle premises at any time between July 15 and October 15, 2009. Any exhibitor/animal found in violation of this rule will be ineligible to compete at the 2008 NC State Fair, and may be subject to an additional probationary period.
3. Open to North Carolina residents 21 years of age and younger as of January 1, 2009. Exhibitors must be able to exhibit animal on their own without any assistance.
4. Exhibitors will be allowed to enter three heifers per breed but will be limited to exhibit two of the entries per breed in the Heifer Show. **NO SUBSTITUTIONS** will be allowed.
5. Heifers must be halter broken. Unruly animals that may endanger the safety of exhibitors will be asked to leave the ring.

6. Entries must be postmarked NO LATER THAN SEPTEMBER 15, 2009. This rule will be enforced.
7. **Entries for Junior Beef Heifer Show must be on separate entry forms from the Open Beef Show, Feeder Calf Show, Jr. Market Steer Show.**
8. Any listed breed with less than 15 head entered in the Junior Beef Heifer Show will show in the "All Other Breeds or AOB" classes. Any breed that fails to show a minimum of 15 head for two consecutive years will be dropped from catalog.
9. If a junior has more than one heifer in a class, the other heifer must be shown by a junior (must be a resident of North Carolina) approved by the show/Superintendent.
10. NO adhesives are allowed. NO painting or dyeing is allowed. Any animal found in violation of this rule, when rubbed with a white cloth or other means,  must be immediately disqualified and the exhibitor along with any additional entries may be subject to disqualification.
11. All exhibitors are automatically entered in the Jr. Beef Showmanship Competition. Refer to the Showmanship Award section.
12. Any exhibitor or his representative who interferes with or displays disrespect to a judge, official, or the Fair (at the discretion of the Superintendent) could forfeit any premiums of monies earned and/or are subject to other penalties assessed by the NC State Fair.
13. Any question not covered by these rules will be ruled on by the Superintendent.

EXCEPT AS NOTED, ALL GENERAL RULES OF THE FAIR AND OF THE
LIVESTOCK DIVISION, AND BREED ASSOCIATION RULES
WILL APPLY AND GOVERN THIS DEPARTMENT

JUNIOR BEEF HEIFER CLASSES

PREMIUMS	1stPlace \$110	2ndPlace \$105	3rdPlace \$100	4thPlace \$95
PREMIUMS	5thPlace \$90	6thPlace \$85	7thPlace \$80	8thPlace \$75
PREMIUMS	9thPlace \$70	10thPlace \$65	11thPlace \$60	12thPlace \$55
PREMIUMS	13thPlace \$50	14thPlace \$45	15thPlace \$40	16thPlace \$35
PREMIUMS	17thPlace \$30 18th & above \$25			
PREMIUMS GRAND CHAMPION \$50 (Pewter Plate)				
PREMIUMS RESERVE GRAND CHAMPION \$25 (Pewter Plate)				

All Other Breeds or AOB

If an effort to increase purebred representation and allow registered, low-percentage cattle the opportunity to compete in a class other than commercial, the NC State Fair has introduced the All Other Breeds or AOB class. For cattle to be eligible for this class, they must have registration papers which must be presented at check-in. Any animal that does not have registration papers will be placed in the appropriate commercial class.

SHOW ORDER

Friday, October 16, 2009 at 2:00 p.m.

AOB, Santa Gertrudis, Charolais

Saturday, October 17, 2009 at 8:00 a.m.

Gelbvieh	Angus
Commercial	Simmental
Hereford	Limousin
	Red Angus

Break for Sale of Champions at 11:00 a.m. and Livestock Special Awards at 2:00 p.m.
Resume show 15 minutes after the conclusion of the Special Awards Show.

Category A

SANTA GERTRUDIS

- KD3001 March and April, 2009
- KD3002 January and February, 2009
- KD3003 November and December, 2008
- KD3004 September and October, 2008
- KD3005 July and August, 2008
- KD3006 May and June, 2008
- KD3007 March and April, 2008
- KD3008 January and February, 2008
- KD3009 November and December, 2007
- KD3010 September and October, 2007

GRAND CHAMPION SANTA GERTRUDIS
RESERVE GRAND CHAMPION SANTA GERTRUDIS
Category B

CHAROLAIS

- KD3011 March and April, 2009
- KD3012 January and February, 2009
- KD3013 November and December, 2008
- KD3014 September and October, 2008
- KD3015 July and August, 2008
- KD3016 May and June, 2008
- KD3017 March and April, 2008
- KD3018 January and February, 2008
- KD3019 November and December, 2007
- KD3020 September and October, 2007

GRAND CHAMPION CHAROLAIS
RESERVE GRAND CHAMPION CHAROLAIS
Category C

GELBVIEWH-Balancer or 75% Hybrid Pedigree

- KD3021 March and April, 2009
- KD3022 January and February, 2009
- KD3023 November and December, 2008
- KD3024 September and October, 2008
- KD3025 July and August, 2008
- KD3026 May and June, 2008
- KD3027 March and April, 2008
- KD3028 January and February, 2008
- KD3029 November and December, 2007
- KD3030 September and October, 2007

GRAND CHAMPION GELBVIEWH
RESERVE GRAND CHAMPION GELBVIEWH
Category D

ALL OTHER BREEDS

- KD3031 March and April, 2009
- KD3032 January and February, 2009
- KD3033 November and December, 2008
- KD3034 September and October, 2008
- KD3035 July and August, 2008
- KD3036 May and June, 2008
- KD3037 March and April, 2008
- KD3038 January and February, 2008
- KD3039 November and December, 2007
- KD3040 September and October, 2007

GRAND CHAMPION ALL OTHER BREEDS
RESERVE GRAND CHAMPION ALL OTHER BREEDS

Category F

ANGUS

- KD3051 March and April, 2009
- KD3052 January and February, 2009
- KD3053 November and December, 2008
- KD3054 September and October, 2008
- KD3055 July and August, 2008
- KD3056 May and June, 2008
- KD3057 March and April, 2008
- KD3058 January and February, 2008
- KD3059 November and December, 2007
- KD3060 September and October, 2007

GRAND CHAMPION ANGUS
RESERVE GRAND CHAMPION ANGUS
Category G

SIMMENTAL

- KD3061 March and April, 2009
- KD3062 January and February, 2009
- KD3063 November and December, 2008
- KD3064 September and October, 2008
- KD3065 July and August, 2008
- KD3066 May and June, 2008
- KD3067 March and April, 2008
- KD3068 January and February, 2008
- KD3069 November and December, 2007
- KD3070 September and October, 2007

GRAND CHAMPION SIMMENTAL
RESERVE GRAND CHAMPION SIMMENTAL
Category H

LIMOUSIN

- KD3071 March and April, 2009
- KD3072 January and February, 2009
- KD3073 November and December, 2008
- KD3074 September and October, 2008
- KD3075 July and August, 2008
- KD3076 May and June, 2008
- KD3077 March and April, 2008
- KD3078 January and February, 2008
- KD3079 November and December, 2007
- KD3080 September and October, 2007

GRAND CHAMPION LIMOUSIN
RESERVE GRAND CHAMPION LIMOUSIN
Category I

RED ANGUS

- KD3081 March and April, 2009
- KD3082 January and February, 2009
- KD3083 November and December, 2008
- KD3084 September and October, 2008
- KD3085 July and August, 2008
- KD3086 May and June, 2008
- KD3087 March and April, 2008
- KD3088 January and February, 2008
- KD3089 November and December, 2007
- KD3090 September and October, 2007

GRAND CHAMPION RED ANGUS \$150
RESERVE GRAND CHAMPION RED ANGUS \$100

25th Anniversary Champion Premiums
sponsored by Twin B Farm

Category E

HEREFORD

KD3041 March and April, 2009
KD3042 January and February, 2009
KD3043 November and December, 2008
KD3044 September and October, 2008
KD3045 July and August, 2008
KD3046 May and June, 2008
KD3047 March and April, 2008
KD3048 January and February, 2008
KD3049 November and December, 2007
KD3050 September and October, 2007

GRAND CHAMPION HEREFORD
RESERVE GRAND CHAMPION HEREFORD

Category J

COMMERCIAL

KD3091 March and April, 2009
KD3092 January and February, 2009
KD3093 November and December, 2008
KD3094 September and October, 2008
KD3095 July and August, 2008
KD3096 May and June, 2008
KD3097 March and April, 2008
KD3098 January and February, 2008
KD3099 November and December, 2007
KD4000 September and October, 2007

GRAND CHAMPION COMMERCIAL
RESERVE GRAND CHAMPION COMMERCIAL

JIMMY SMITH MEMORIAL AWARD

The N.C. Simmental Association will be presenting an award to an outstanding Simmental exhibitor in the Junior Beef Heifer Show in memory of the late Jimmy Smith of Cove City. Jimmy Smith was a strong supporter of the Junior Beef Heifer Show by providing heifers for many urban and rural youth to show, and providing guidance both inside and outside the show ring. A belt buckle will be awarded to a Junior Simmental exhibitor that shows good sportsmanship, leadership and good conduct throughout the Junior Show weekend. Assisting other exhibitors, helping to keep the barn clean and promoting agriculture will be taken into account by the selection committee. This award will be determined by a committee assigned by the N.C. Simmental Association, and will be presented during the Junior Simmental Show.

MILEAGE PAYMENTS

The State Fair Management will pay mileage compensation for animals exhibited in the Junior Heifer Show as outlined here. Payment will be made for each animal based on the distance (one-way) between the county seat of the county involved and Raleigh. For computing mileage, the official Highway Map issued by the State Department of Transportation will be used. Payments will be made on the basis of \$.50 per animal, per mile.

MILEAGE \$0.50

SHOWMANSHIP AWARD

The objective of the Showmanship Award is to provide recognition to youth that have developed proper showmanship skills through work with their livestock projects. These skills will be evaluated separately from the quality of the animal shown while the youth exhibit an animal in the Junior Market Steer and Junior Heifer Shows. The showmanship judge, a second official, will select the youth solely on their showmanship ability.

Youth are automatically entered into this showmanship competition. Youth must exhibit the animal they entered to be fully eligible for the award. Youth that show for another exhibitor will **NOT** be eligible.

Recipients of the Showmanship Pin will be recognized at the conclusion of each class. A Beef Showmanship pin will be provided by the NC State Fair to each exhibitor honored. Youth may be recognized in more than one class if circumstances merit the award.

Youth to be recognized will not be a set number. No minimum or maximum quotas exist. The showmanship judge will simply recognize all youth that are deserving of the Showmanship Pin. Only exhibitors receiving the Showmanship Pin may compete in the Showmanship Champion classes.

Category K **SHOWMANSHIP CHAMPION CONTEST**

PREMIUMS 1st in each age division \$100 and Banner
All other exhibitors \$25

Exhibitors MUST COMPETE in the Showmanship Champion classes to receive any showmanship premiums.

Each exhibitor receiving a Showmanship Pin in the Junior Market Steer Show and/or the Junior Beef Heifer Show, is eligible to return for the Showmanship Champion class. The animal taken into the ring for this class must be entered in the respective showman's name. The Championship classes will be held Saturday, October 17, 2009, immediately following the last class in the Junior Beef Heifer Show.

- KD4100 Junior Division 11 and under
- KD4101 Intermediate Division 12-14
- KD4102 Senior Division 15-18
- KD4103 Senior Plus 19-21

Category L **JR. BEEF HERDSMEN'S CONTESTS**

PREMIUMS JrHerdsmen 1st \$125 JrHerdsmen 2nd \$100 JrHerdsmen 3rd \$75
PREMIUMS JrHerdsmen 4th \$50 JrHerdsmen 5th \$25

Special prizes will be awarded in contests for herdsman, shepherd and caretakers of animals in all livestock departments. All herdsman will automatically be considered entrants and no special entry is required. Judges will be assigned by the Livestock director. The contests will start at a time designated by each Department.

The following score card will serve as the basis for the judge in the Herdsman's contest making their decisions:

	Points
Condition and cleanliness of herd or flock	20
Cleanliness of stalls/pens and alleyways	20
Signs indicating where the animals are from and who is showing them	20
Educational material or other displays that will interest the general public ...	20
Courtesy of exhibitors in both the show ring and the barn	20
	100

Senator James D. Speed Achievement Award

An award will be presented to a deserving Junior Beef exhibitor ages 14-18 years old, in the Jr. Market Steer &/or Jr. Heifer competition. During his 32 years in the NC General Assembly as a Senator, James Speed's hard work and dedication was evident in promoting agricultural interest in North Carolina. To recognize him for all he has done for NC farmers and being a cattleman himself, the Franklin Co. Cattlemen's Association is honoring him with an Achievement Award in his name: A \$500 US Treasury Savings Bond will be presented to a deserving youth in his honor.

Selection criteria include strong leadership skills, integrity, good sportsmanship, goal oriented, and promoting today's agricultural industry. This award will be determined by a committee assigned by the Franklin County Cattlemen's Association and will be presented during the NC State Fair. To be considered for this award, download and complete the application at <http://franklin.ces.ncsu.edu> or call 919 496-3344. Applications must be postmarked by September 15th to be considered for this special award.